

Squid Analysis

Alex Douglas

09 November, 2021

Sampling and data description

These data were originally collected as part of a study published in Aquatic Living Resources (Smith *et al.*, 2005). The aim of the study was to investigate the seasonal patterns of investment in somatic and reproductive tissues in the long finned squid *Loligo forbesi* caught in Scottish waters. Squid were caught monthly from December 1989 - July 1991 (**month** and **year variables**). After capture, each squid was given a unique specimen code (**specimen variable**) and the following variables measured:

- **weight variable** - body weight (g)
- **sex variable** - sex (only female squid are included here)
- **DML variable** - individual dorsal mantle length (mm)
- **eviscerate.weight variable** - mantle weight measured without internal organs (g)
- **ovary.weight variable** - gonad weight (g)
- **nid.weight variable** - nidamental gland weight (g)
- **nid.length variable** - nidamental gland length (g)
- **dig.weight variable** - digestive gland weight (g)

Each individual was also assigned a categorical measure of maturity (**maturity.stage variable**) ranging from 1 to 5 with 1 = immature, 5 = mature.

Some interesting background information on squid morphology can be found here and the following image provides a useful summary of squid anatomy.

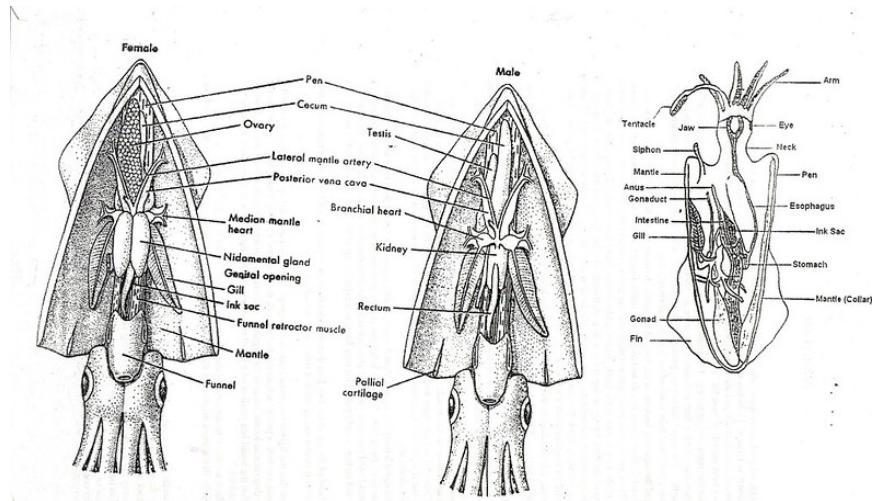


Figure 1: squid anatomy

Data import and exploration

```
squid <- read.table("./data/squid1.txt", header = TRUE)
str(squid, vec.len = 2)
```

```
## 'data.frame':   519 obs. of  13 variables:
## $ sample.no      : int  105128901 105128901 105128901 105128901 105128901 ...
## $ specimen       : int  1002 1003 1005 1007 1008 ...
## $ year           : int  1989 1989 1989 1989 1989 ...
## $ month          : int  12 12 12 12 12 ...
## $ weight         : num  152 106 ...
## $ sex            : int  2 2 2 2 2 ...
## $ maturity.stage : int  3 1 2 2 3 ...
## $ DML            : int  174 153 169 175 169 ...
## $ eviscerate.weight: num  87.5 62.6 79.4 83.1 72.2 ...
## $ dig.weight     : num  4.65 3.14 ...
## $ nid.length     : num  39.4 24.1 39 41.4 39.8 ...
## $ nid.weight     : num  2.46 0.319 ...
## $ ovary.weight   : num  1.68 0.103 0.289 0.252 0.86 ...
```

In this dataset 519 squid were caught and 13 variables were measured for each squid. Details are shown above.

The variables `maturity.stage`, `month` and `year` were converted from integers to factors in the dataframe `squid`. These recoded variables were named `Fmaturity`, `Fmonth` and `Fyear`.

Next, let's take a look at the number of observations across years and months.

```
library(knitr)
kable(table(squid$Fmonth, squid$Fyear), row.names = TRUE, format = "markdown")
```

	1989	1990	1991
1	0	3	37
2	0	0	30
3	0	40	29
4	0	10	33
5	0	1	30
6	0	0	14
7	0	42	1
8	0	29	0
9	0	82	0
10	0	19	0
11	0	76	0
12	12	31	0

In 1989 data were only collected during December and in 1991 data collection stopped in August. During 1990, no data were collected in either February or June. There are also some months that have very few observations (May 1990 and July 1991 for example) so care must be taken when modelling these data.

Number of observations in each month for each of the squid maturity stages are given in the table below.

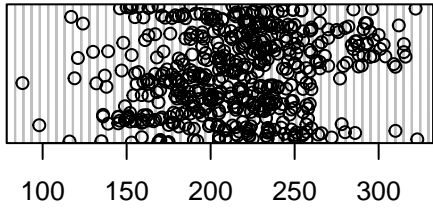
	1	2	3	4	5	6	7	8	9	10	11	12
1	0	0	0	2	0	4	8	0	1	1	1	4
2	1	1	0	1	0	6	22	21	76	17	31	7
3	2	0	0	1	1	0	0	5	5	1	31	11
4	18	8	21	20	6	1	5	3	0	0	10	15
5	19	21	48	19	24	3	8	0	0	0	3	6

Not all maturity stages were observed in all months. Very few squid of maturity stage 1, 2 or 3 were caught in the months January to May whereas maturity stages 4 and 5 were predominantly caught during these months.

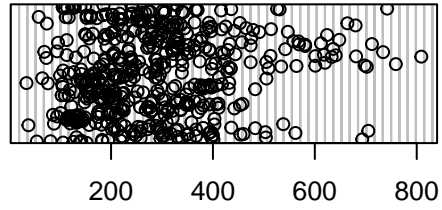
Now let's check for any unusual observations in the variables; `DML`, `weight`, `nid.length` and `ovary.weight`.

```
par(mfrow = c(2, 2))
dotchart(squid$DML, main = "DML")
dotchart(squid$weight, main = "weight")
dotchart(squid$nid.length, main = "nid length")
dotchart(squid$ovary.weight, main = "ovary weight")
```

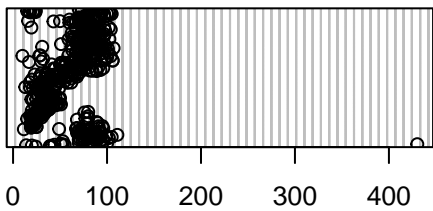
DML



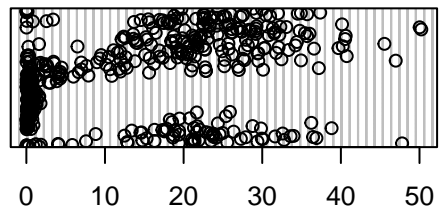
weight



nid length

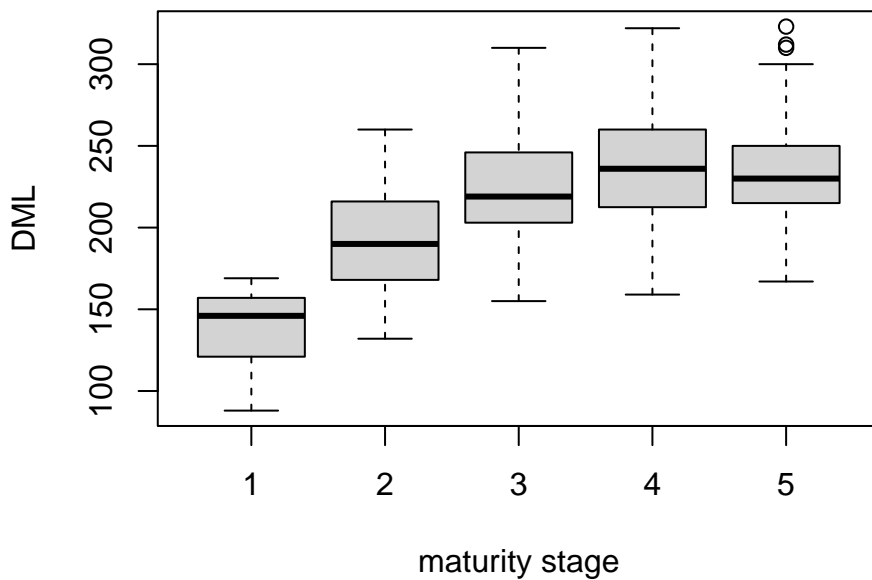


ovary weight



It looks like the variable `nid.length` contains an **unusually large** value. Actually, this value is biologically implausible and clearly an error. I went back and checked my field notebook and sure enough it's a typo. I was knackered at the time and accidentally inserted a zero by mistake when transcribing these data. **Doh!** This squid was identified as 11 with a sample number 105128901. This observation was subsequently removed from the data set.

Let's take a look at whether DML changes with maturity stage.



DML was lowest for maturity stage 1 with a mean length of 139.14 mm. DML increased until maturity stage 3 (mean 222.35 mm) after which it remained reasonably consistent for maturity stages 4 (mean 238.6 mm) and 5 (mean 233.99 mm).

Session Information

```
sessionInfo()
```

R version 4.1.1 (2021-08-10)

Platform: x86_64-apple-darwin17.0 (64-bit)

locale: en_GB.UTF-8|en_GB.UTF-8|en_GB.UTF-8|C|en_GB.UTF-8|en_GB.UTF-8

attached base packages: *stats*, *graphics*, *grDevices*, *utils*, *datasets*, *methods* and *base*

other attached packages: *kableExtra*(v.1.3.4), *pander*(v.0.6.4), *htmltools*(v.0.5.1.1), *rms*(v.6.2-0), *SparseM*(v.1.81), *Hmisc*(v.4.5-0), *Formula*(v.1.2-4), *survival*(v.3.2-12), *AICcmodavg*(v.2.3-1), *stringr*(v.1.4.0), *dplyr*(v.1.0.7), *ggplot2*(v.3.3.5), *knitr*(v.1.33), *effects*(v.4.2-0), *nlme*(v.3.1-152), *car*(v.3.0-11), *carData*(v.3.0-4) and *lattice*(v.0.20-44)

loaded via a namespace (and not attached): *TH.data*(v.1.0-10), *VGAM*(v.1.1-5), *minqa*(v.1.2.4), *colorspace*(v.2.0-2), *ellipsis*(v.0.3.2), *rio*(v.0.5.27), *estimability*(v.1.3), *htmlTable*(v.2.2.1), *base64enc*(v.0.1-3), *rstudioapi*(v.0.13), *farver*(v.2.1.0), *MatrixModels*(v.0.5-0), *fansi*(v.0.5.0), *mutnorm*(v.1.1-2), *xml2*(v.1.3.2), *codetools*(v.0.2-18), *splines*(v.4.1.1), *jsonlite*(v.1.7.2), *nloptr*(v.1.2.2.2), *cluster*(v.2.1.2), *png*(v.0.1-7), *compiler*(v.4.1.1), *httr*(v.1.4.2), *backports*(v.1.2.1), *Matrix*(v.1.3-4), *survey*(v.4.1-1), *formatR*(v.1.11), *quantreg*(v.5.86), *tools*(v.4.1.1), *gtable*(v.0.3.0), *glue*(v.1.4.2), *tinytex*(v.0.33), *Rcpp*(v.1.0.7), *cellranger*(v.1.1.0), *jquerylib*(v.0.1.4), *raster*(v.3.4-13), *vctrs*(v.0.3.8), *svglite*(v.2.0.0), *conquer*(v.1.0.2), *insight*(v.0.14.3), *xfun*(v.0.25), *openxlsx*(v.4.2.4), *lme4*(v.1.1-27.1), *rvest*(v.1.0.1), *lifecycle*(v.1.0.0), *polyspline*(v.1.1.19), *MASS*(v.7.3-54), *zoo*(v.1.8-9), *scales*(v.1.1.1), *hms*(v.1.1.0), *parallel*(v.4.1.1), *sandwich*(v.3.0-1), *RColorBrewer*(v.1.1-2), *yaml*(v.2.2.1), *curl*(v.4.3.2), *gridExtra*(v.2.3), *sass*(v.0.4.0), *rpart*(v.4.1-15), *latticeExtra*(v.0.6-29), *stringi*(v.1.7.4), *highr*(v.0.9), *checkmate*(v.2.0.0), *boot*(v.1.3-28), *zip*(v.2.2.0), *systemfonts*(v.1.0.2), *rlang*(v.0.4.11), *pkgconfig*(v.2.0.3), *matrixStats*(v.0.60.1), *evaluate*(v.0.14), *purrr*(v.0.3.4), *htmlwidgets*(v.1.5.3), *labeling*(v.0.4.2), *tidyselect*(v.1.1.1), *plyr*(v.1.8.6), *magrittr*(v.2.0.1), *R6*(v.2.5.1), *generics*(v.0.1.0), *multcomp*(v.1.4-17), *DBI*(v.1.1.1), *pillar*(v.1.6.2), *haven*(v.2.4.3), *foreign*(v.0.8-81), *withr*(v.2.4.2), *abind*(v.1.4-5), *sp*(v.1.4-5), *nnet*(v.7.3-16), *tibble*(v.3.1.3), *crayon*(v.1.4.1), *utf8*(v.1.2.2), *rmarkdown*(v.2.10), *jpeg*(v.0.1-9), *grid*(v.4.1.1), *readxl*(v.1.3.1), *data.table*(v.1.14.0), *forcats*(v.0.5.1), *webshot*(v.0.5.2), *digest*(v.0.6.27), *xtable*(v.1.8-4), *stats4*(v.4.1.1), *munsell*(v.0.5.0), *unmarked*(v.1.1.1), *viridisLite*(v.0.4.0), *bslib*(v.0.2.5.1) and *mitools*(v.2.4)